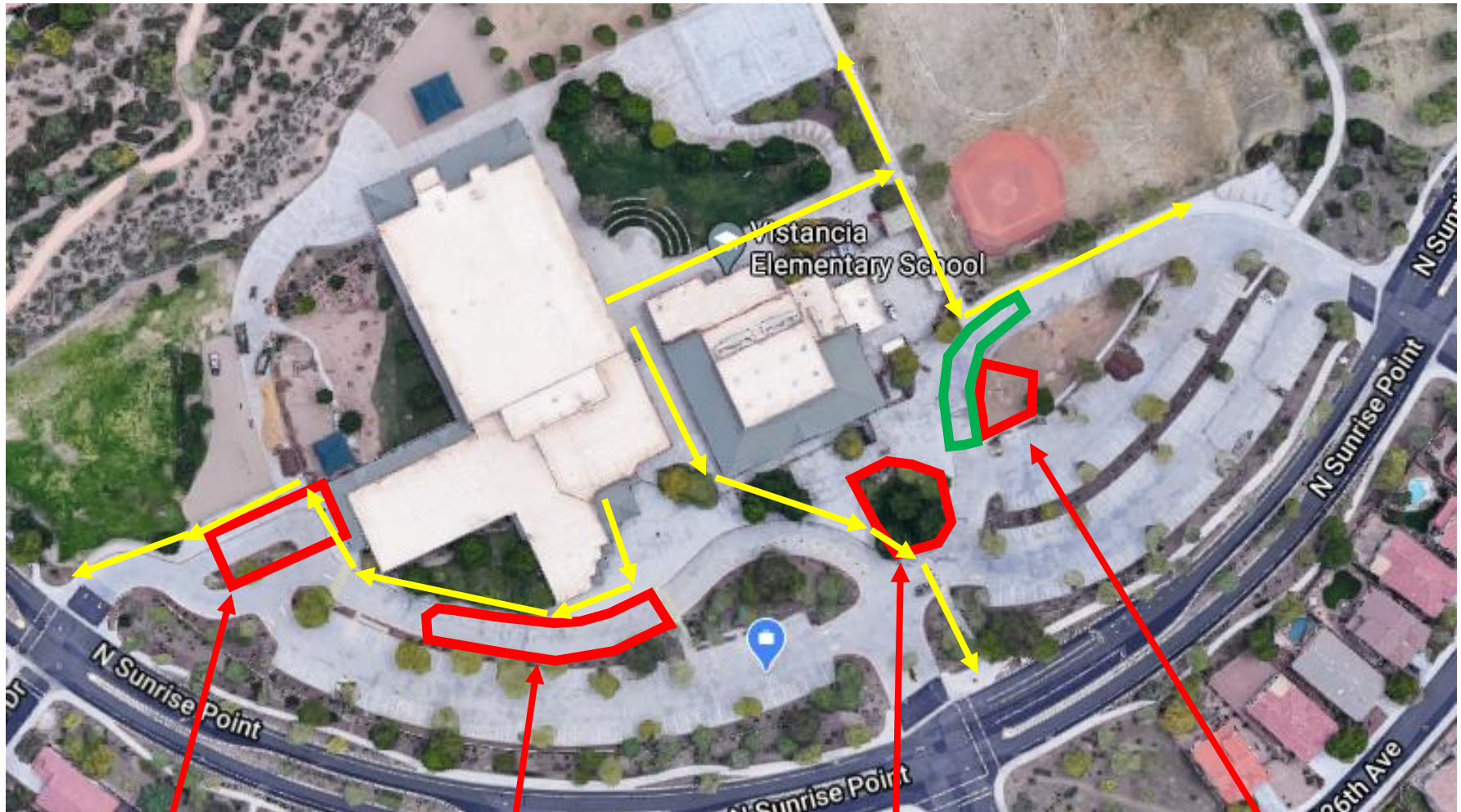


Dismissal Map

*Yellow arrows show routes for student walkers

**Red areas show parent pick-up areas

***Green area is bus bay



Kindergarten Pick-Up Area: curb outside of kinder playground

Main Pick-Up Line: curbside in between fences

Walker Parent Pick-Up: grass area under trees near south lot

South Parking Lot Pick-Up: in rock area south of bus lane

Vistancia Dismissal Procedures:

We continue to employ our controlled dismissal process that we have been using through the PikMyKid App. Students will dismiss from their homerooms at a time determined by how they will be getting home.

Bus Riders:

- Kindergarten – 2nd grade bus riders will continue to release from class at 2:55 to organize in the main hallway near the elevator.
- 3rd – 8th grade bus riders will remain in their classroom until the bus arrives in our parking lot. We will have a duty monitor in the south parking lot who will alert classrooms to which busses are arriving and students will make their way out to the busses.
- Bus riders will release from class as their bus arrives on site. Students will not be waiting outside for busses. Kindergarten, first, and second graders will have staff escorting them to the bus area. The bus area is marked in Green on the Dismissal Map.

Walkers:

- Students who will be walking or biking home without parents will be dismissed at 3:00 on Monday, Tuesday, Thursday, and Friday and 1:00 on Wednesdays. To minimize crowding and promote distancing, walkers and bikers need to follow the paths highlighted by the Yellow arrows on the Dismissal Map. Students should not be waiting around on campus, but need to dismiss promptly, walk the designated pathways, meet up with siblings, and head home.
- The sibling meeting area will be in the main interior hallway at the **tile wall** next to the trophy case
- Older walking students can pick up kindergarten siblings at their kindergarten classroom and walk home from there.
- If students will be attending the AM/PM program, they will dismiss at 3:00 with the rest of the walkers and follow the AM/PM staff directions to report to the program.

Parent Pick-up:

Students will remain in their classrooms until parents are present for pick up. They will not be waiting outside. Students who will be picked up by parents, either driving or walking, will report to designated zones once parents electronically check in. The four zones on the map outlined in Red show the locations for parents to report to and check in with duty staff. Look for a staff member in that area if you need help with the dismissal app

- Parents/guardians, please “Announce” your arrival on campus through the app or with a duty person once you reach the location you’ve designated for your child(ren)’s dismissal.
- Students will release from class once they’ve been announced and proceed to the area in which parent has designated for pick-up.

- *All curbside pick-up traffic will flow through the main drive in front of office. **The front parking lot will be closed at dismissal to incoming traffic.** If you will be parking to pick up students, this is only in the South Lot.*
- South Parking Lot: parents should stay in designated South Parking Lot pickup area until student arrives to cross to parking lot.
- Kindergarten Pick-up area:
 - Parents can walk up to kinder gates and check in
 - Parents can drive through main car line, check in and pull forward to kindergarten pick up area.